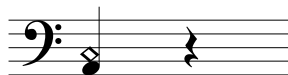


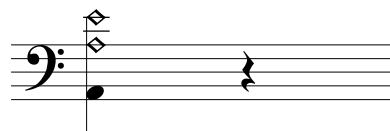
# Strange behaviour

## with double harmonics for the double bass

In place of this harmonic  
at the minor third:



I prefer to play this  
double harmonic. It's  
easier to find and speaks  
better on the double bass



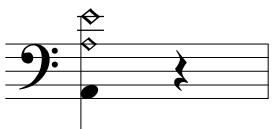
Here are the steps I have to take  
to create this harmonic:



1) Enter notes



2) Change upper two notes to diamond note heads  
(no. 79 in symbol selection)



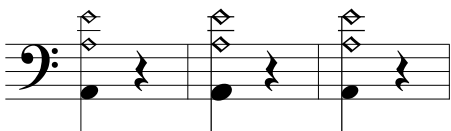
3) To my eye, the diamonds look too small, so I enlarge the note heads to 120%.  
The first one works OK



4) But on changing the A note head to 120%, the upper note reverts back to a  
crotchet note head at 100%.



5) I have to change that note back to a diamond and enlarge it to 120%.  
Sometimes the same happens again as in step 4, but eventually Finale  
allows me two diamond note heads at 120%



6) I have worked out another method.  
From step 2, I enlarge the whole chord to  
120% and then reduce the lower note head  
(crotchet head) to 80%.

However, I would really like to avoid the extra work involved with steps 4 and 5!